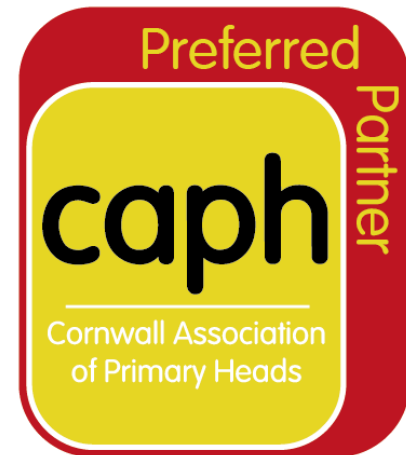


Rockerbox
News



zenergi

ypo



MILSTED LANGDON





CAPH preferred partners offer support to both CAPH and our member schools. As a not-for-profit Community Interest Company our focus is improving our services to schools, offering excellent value for money. Any funds generated go into programmes to support schools and children. Our partnerships are an important part of ensuring the sustainability of CAPH.

We work with partners who:

- ✓ **provide financial savings to schools**
- ✓ **provide an innovative alternative to existing provision**
- ✓ **provide support for the Board of CAPH CIC**
- ✓ **work with CAPH to develop workshops, events and training in the local area**
- ✓ **contribute to CAPH.**



eleanor.devenish@bfadventure.org



01326 340 912



www.bfadventure.org

With many years experience working with young people in crisis, BF can provide a safe space to stabilise, challenge and build skills that impact on long term outcomes.



CAPH member offer

CAPH member schools get a 5% discount when using BF Adventure services – Applies to standard Group activity days.

BF Adventure is running several offers, including:

1. [FREE site visits and sample activities](#) – you can [email them](#) to arrange a visit.
2. The chance to receive a [£100 activity voucher](#) by referring other schools to them: Simply [email them](#) and copy in the teacher who's interested. If they book a residential, you can choose to use the £100 against a future school booking OR a personal family booking!



hello@stayatcohort.co.uk



07855 490831 / 01736 791664



<https://education.stayatcohort.co.uk>

If you are looking for a venue for your Camps: Cohort may be your solution.

Established in 2015, Cohort is an inspiring Residential Centre for schools in the heart of St Ives - minutes from all the beaches, coast path, Tate St Ives and Leach Pottery.

Superb accommodation, great facilities for either self-catering or full board with a team to support organisers throughout all the activity planning.



Cohort offers up unique ideas and itineraries to deliver brilliantly enriching school camps. Ideal for KS2 residentials.





Cornerstones



enquiries@cornerstoneseducation.co.uk



[03333 20 8000](tel:03333208000)



[Curriculum | Cornerstones Education](#)

Join over 1600 Cornerstones schools making a difference to teachers, leaders and children.

Cornerstones Education is a team of experienced, specialist primary educators leading forward-thinking primary schools to a smarter online curriculum. Cornerstones have developed Curriculum Maestro, a platform that provides the content, tools and teaching resources to design, develop, implement, adapt and assess an ambitious primary curriculum bespoke to your school.

Working in partnership with schools of all sizes and configurations, Cornerstones will help you to give teachers and subject leaders more free time, eliminate inspection stress, resolve your curriculum issues and reduce your costs.

CAPH member offer

5% discount on your first year's purchase of Curriculum Maestro.





treandpet@dandelionlearning.co.uk



07792 349188 (Tre); 07779 337450 (Pet)

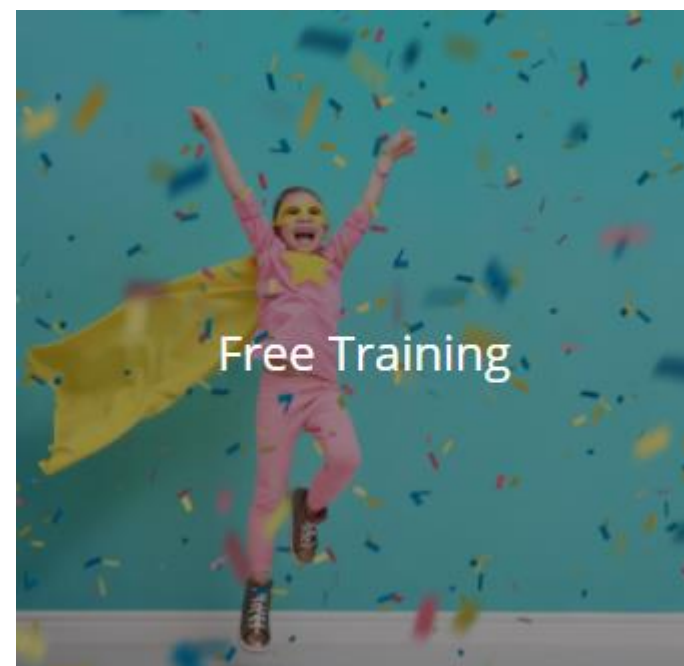


www.dandelionlearning.co.uk/



Inspirational Primary English Training for Schools

- ✓ Help to audit provision providing a clear, focused plan
- ✓ Inspirational training using proven techniques to ensure all pupils succeed
- ✓ Bespoke training for you (through INSET, twilights, leadership and English planning support)
- ✓ Ongoing support to ensure lasting impact on pupil progress.



Discovery RE®

The **enquiry** approach to
Religious Education



office@janlevergroup.com



+44 (0)1202 377192



<https://discoveryschemeofwork.com/>



Discovery RE® is an enquiry approach to Religious Education for Primary Schools which consistently delivers excellent learning outcomes. Discovery RE is a set of detailed medium-term planning for ages 3-11 which considers Christianity in every year group with a choice of one other religion or worldview each year.

These choices are aligned with the [Cornwall Agreed Syllabus](#) and offer additional scope to include Buddhism, Sikhism, Humanism and more at the school's discretion. Discovery RE is also compatible with Understanding Christianity, having worked with the Church of England to see how to fit the two together for best effect for Church Schools using UC.



eSchools provides schools with a market leading learning platform (VLE), packed full of features above and beyond that of others available to schools. The platform links with eSchools' custom designed school websites.

 hello@eschools.co.uk

 0845 557 8070

 www.eschools.co.uk/

[View current CAPH members offers!](#)

Including reduced website redesign costs & free website check



Parents Evening Bookings

View available times and easily confirm a parents evening schedule with a couple of clicks.





Educatering

The School Food Revolution



At Goosemoor Educatering we enable schools to use the very best locally sourced, restaurant quality products to provide exciting, child-led, nutritionally balanced meals. By removing the procurement level of the supply chain, this can be achieved within schools current budget, leading to cost neutral or surplus positions.

MEAL STANDARDS & COST

- Increasingly tight school budgets.
- Inferior products being supplied.
- Too many companies in the supply chain (driving up costs to the end user).
- In House Kitchens - Lack of expertise within the school to direct and lead the catering staff.
- Contract Caterers - Lack of control over the catering provision.

THE CURRENT SUPPLY CHAIN



THE CURRENT SUPPLY CHAIN



TERMLY SERVICE FEE

- Covers all menu design, compliance, training, audits, logbooks and files.
- These are based on numbers of pupils.
- Discount for beacon schools.

GOODS SUPPLIED BY GOOSEMOOR

- We supply all products and produce for your meals.
- One delivery, one van, less food miles.
- The very best in locally sourced ingredients to tickle those taste buds.

CAPH MEMBER OFFER

Educatering will **waive your first terms service fee**





 jjenkin@ict4.co.uk

 01209 311344

 www.ict4.co.uk

Offers for CAPH members!

- Free ICT health check encompassing equipment, admin and curriculum usage, best practices including MIS, data protection and statutory requirements.
- Discount off remote backup services (excluding licenses)
- Discount off managed encryption service.

At iCT4 we specialise in IT solutions for education. We manage the technology for schools so teachers can focus on what they do best.





 judy.allies@janleveragegroup.com

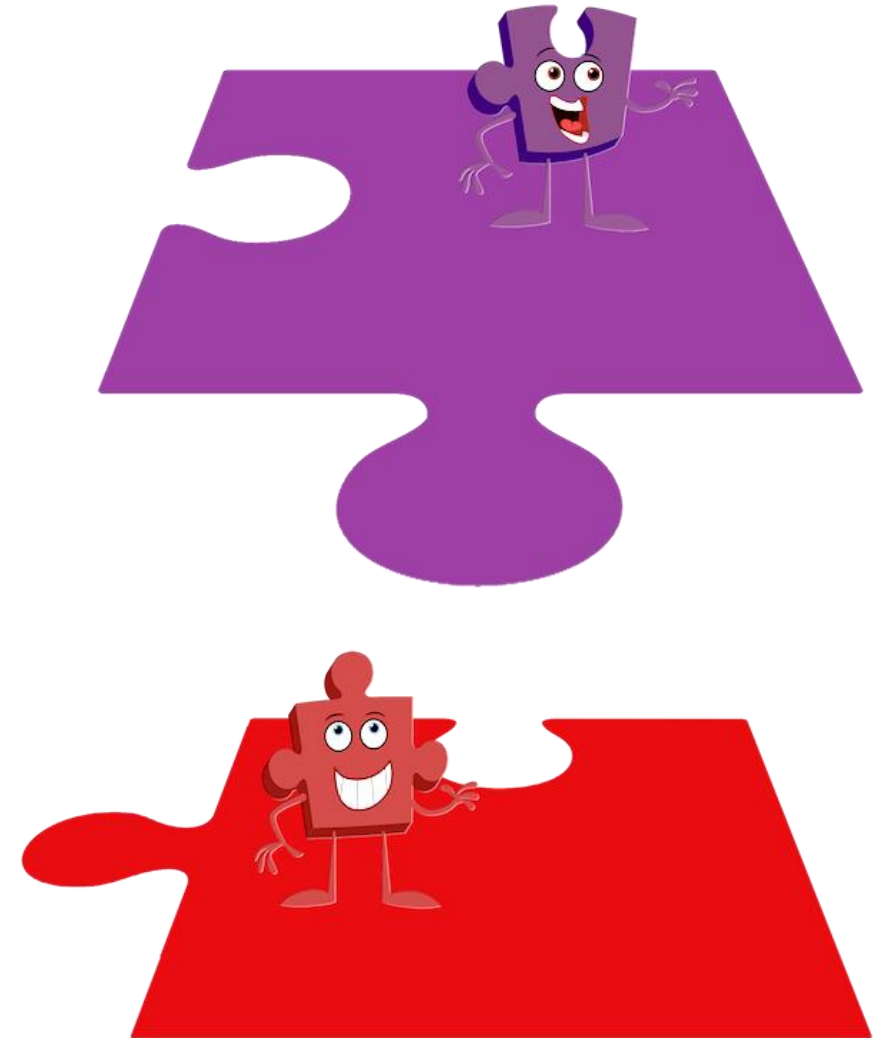
 07835 485622

 www.jigsawpshe.com/

Offers for CAPH members!

- ✓ 10% discount on teaching materials available
- ✓ Free sample PSHE (including RSHE) policy available
- ✓ Free training webinars

Jigsaw, the mindful approach to PSHE, is an established and comprehensive teaching programme, that, in 36 lessons for each year, provides children with their entitlement to PSHE that really equips them for life and learning; fully teaches all the x67 statutory Relationships and Health Education outcomes (with built-in progression and assessment); offers age-appropriate Sex Education; covers all the expectations of the PSHE Association Programme of Study; and provides all the teaching resources needed as well as free updates and ongoing support for teachers.





Kernow

Social, Emotional,
Mental Health

Kernow SEMH Support Service is a consultancy and training business run by Penny Hermes. We offer a wide range of training to all school staff around Behaviour, Social, Emotional and Mental Health needs of children.



pennyhermes@kernowsupport.com



07878784818



<https://kernowsupport.co.uk/>

CAPH Member Offer

✓ 5% discount on services



New for 2021/22

Intervention Program - 10 week program for SEMH vulnerable children

Supervision - Supervision sessions with a TIS trained practitioner and Team Teach tutor.

New staff meeting sessions - New training opportunities in emotion coaching; building resilience; using the outdoors to support SEMH pupils.



 Professor Tanya Ovenden-Hope

 01872 303022

 Marjon website

CAPH Member Offer

A 10% discount for any staff in CAPH member organisations against full fees for the MA Education and MA Education (Leadership) undertaken with Marjon University Cornwall.

CAPH schools can access university accredited CPD at preferential rates.

Marjon University Cornwall, Truro offers the following part time courses:

- [MA Education](#)
- [MA Education - Leadership](#)
- Postgraduate research degrees (PhD/MPhil)
- Accredited CPD (at degree and masters level, including school based research development)



MILSTED LANGDON



Sonja Selby - sselby@mlifa.co.uk



07887 765 877



[Milsted Langdon Financial Planning](#)

CAPH Member Offer

FREE pensions seminars run in your school for both Teachers and Support Staff - helping staff understand how their pension scheme works.

Milsted Langdon can support Head Teachers' to ensure their duty of care is met by cascading an Education & Information programme to all teaching and non-teaching staff regarding retirement benefits. They will provide free independent Financial Planning Consultations for teaching professionals/support staff and their families.

Contact Sonja Selby, Independent Financial Advisor, to find out more. Sonja is currently able to offer pensions seminars for all staff or one to one consultations via Microsoft Teams.





THE SAFEGUARDING COMPANY

myconcern



The Safeguarding Company products include MyConcern, a secure system for recording and managing all levels of safeguarding and pastoral concern. Sentry, an SCR solution that supports the safer recruitment process and Clarity, a multi-establishment solution that gives high-level reporting at group level.

The Safeguarding Company provides the only truly 360° approach to safeguarding available today through our range of solutions that prevent, reduce and eliminate abuse, harm, and neglect.

CAPH member offer

The Safeguarding Company offer a discount on an annual subscription for MyConcern, Clarity and Sentry for all CAPH members.



info@myconcern.co.uk



03306 600 757



www.thesafeguardingcompany.com//

Sentry™
For Safer Recruitment

— NOW —
LAUNCHED

**Single Central Record Software
to Support and Guide Your
Safer Recruitment Process**



 contact@opuseducation.co.uk

 01872 279 810

 www.opuseducation.co.uk

Key Services

Opus Supply - offering short and medium term staffing solutions for schools, colleges and nurseries.

Opus Permanent - a free service for schools in Cornwall and Devon, advertising your vacancies locally and nationally

Opus Training - offering a range of school support services from pre-OFSTED health checks to behaviour management training to teacher mentoring, and everything in between

CAPH works with Opus Education as our preferred partner for supply provision and permanent recruitment support.

Opus was created for teachers, by teachers as an education support service which approaches recruitment and training in a different way. Opus pays their candidates fairly and charges schools fairly, with over 80% of charge rates going to candidates.

Opus are safeguarding specialists - all candidates are strictly vetted. All consultants are Safer Recruitment trained and all candidates complete level 2 safeguarding training. Schools can access candidate information and a full vetting pack at any time.



PRICE Training provides training and support that seeks to build workforce confidence through knowledge, skills and effective techniques that promote a restraint reduction culture in educational settings.

From a trauma informed perspective, **PRICE Training** recognizes that positive relationships within schools play an important part of the healing process as well helping build resilience, confidence and happiness in pupils; all the essential ingredients for children to learn and thrive.

CAPH member offer

PRICE training offer a 10% discount for CAPH members & further discounts on 'Closed' PRICE Train the Trainer Courses.

 admin@pricetraining.co.uk

 [01568 619390](tel:01568619390)

 [Schools & Education - Price Training](#)




WHAT WE OFFER

strong theoretical base
effective techniques
partnership working
transition support
value for money

WORKING IN PARTNERSHIP WITH SCHOOLS TO:

- protect pupils fundamental human rights
- reduce reliance on restrictive practices
- promote a child-centred and therapeutic approach
- create a safer environment and improve the quality of life for pupils & staff
- reduce the risk of relationship breakdown and school exclusion



Speak to us about a free workshop
presentation

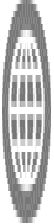
Rockerbox News



Info@myrockerbox.com



[0800 644 8890](tel:08006448890)



<https://myrockerbox.com>

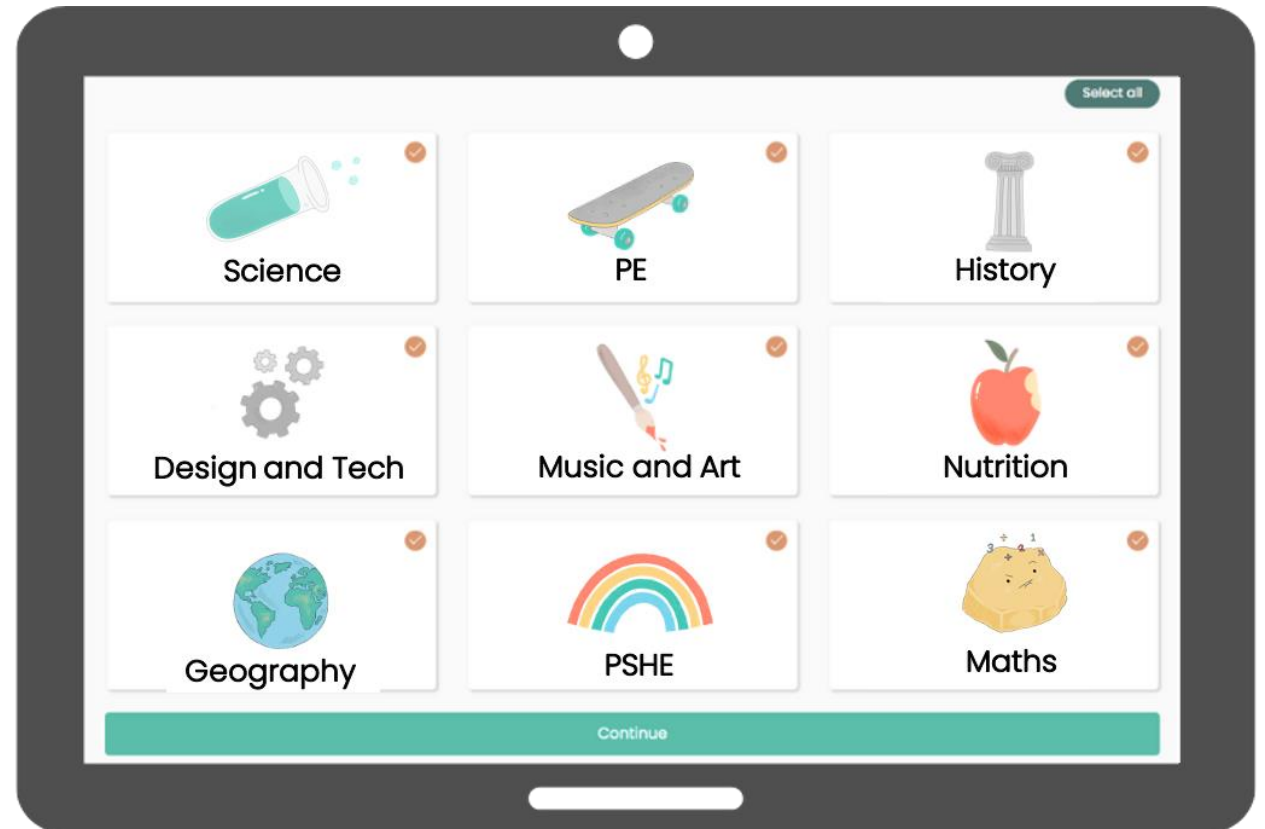
[Why Rockerbox News? - YouTube](#)



Non-Fiction Reading Comprehension Platforms for SEND and EAL Pupils

Rockerbox News teaches the **real-world** reading skills SEND and EAL pupils need to access a wider curriculum and reach their full potential.

Designed by educators for SEND and EAL pupils in KS1-3, special schools, and alternative provisions, Rockerbox News is proven to accelerate reading skills, confidence, and engagement.



20 YEARS' SERVICE



Schools Advisory Service



sales@uk-sas.co.uk; HannahD@uk-sas.co.uk



01773 814400



www.schooladvice.co.uk

Whole School Wellbeing & Staff Absence Insurance

Distinct Policy Options

- **Schools Advisory Service** – the most comprehensive staff absence insurance, including whole school wellbeing
- **Absence Insurance Services** – our cost saving option for restrictive budgets
- **NAHT Wellness & Protect** – wellbeing support with additional support for NAHT member absences
- **Budget Overspend** – absence insurance with a lower initial outlay for schools



"Our staff love the SAS policy, the staff room is full of 'SAS helped me with this' and 'SAS helped me with that'. Best thing we have done."

Feedback from school about SAS Wellbeing Services





Sue Plechowicz and Tracey Foster are qualified Psychologists, teachers and SENCos with a combined experience of over forty years working in education and have a profound understanding of how to support children and young people with disabilities and special educational needs, and their families. We have a wide range of knowledge of SEND provision and support in EYFS, Primary and Secondary settings, as well as the SEN Code of Practice.



senservicessw@gmail.com



07913 179125 or 07854110297



<http://www.senservices.co.uk>

CAPH member offer

5% discount on all service costs

Training available:

- **Planning your year as SENCO**
- **Enabling learners with SEND to make practice with writing**
- **Understanding & supporting children whose behaviour is challenging**
- **Understanding & supporting sensory needs in a mainstream setting**



info@tmscornwall.co.uk



01872 510240, 07970 047478



<https://www.tmscornwall.co.uk/>



CAPH member offer

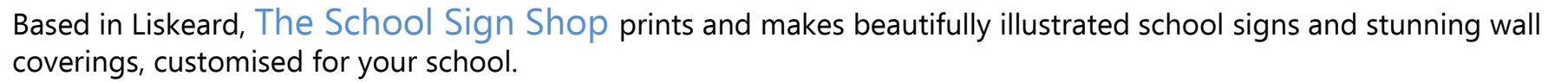
CAPH schools receive a 5% discount on new grounds maintenance contracts.

Team Maintenance Services Ltd operates a well-established specialist service from the heart of Cornwall encompassing all aspects of external grounds maintenance and landscaping.

Key points for schools:

- ✓ Staff are all uniformed, DBS checked and carry identification
- ✓ Trained staff
- ✓ Certified to apply chemicals
- ✓ Annual grounds maintenance schedule
- ✓ Excellent health and safety record
- ✓ Accreditation with Safe Contractor and Contractor Plus
- ✓ We will help you make the most of your outdoor classroom





We even have a large range of British Sign Language designs that we have created in conjunction with the leading BSL resource provider in the UK, Let's Sign BSL.

Our talented illustrators and designers are also on-hand to create bespoke, show-stopping displays. Inspire pupils, motivate staff and wow your visitors with a classroom or corridor makeover that is unique to your school.



01579 340985

<https://theschoolsignshop.co.uk>

We do everything in-house. Our illustrators have decades of experience designing for education. We own industry-leading wide-format print technology and we finish and fabricate everything ourselves.





wildanet

From anywhere to everywhere



lawrence.palk@wildanet.com



0800 0699906



[Home](#) | [Wildanet](#)

We are based in Cornwall and would love to start a conversation with you and find out how we could help upgrade your school to fast, reliable digital connectivity.



At Wildanet, we believe that every person, business and community has the right to be part of the worldwide digital community and to benefit from the opportunities it brings; and nowhere is that more vital than in our schools.

Huge advances in technology over recent years means that children's education is now more reliant on access to the internet than ever before. But it's an unfortunate fact that so many communities are still without access to fast, reliable broadband, putting schools in these areas at a disadvantage to other schools in the UK that are able to benefit from the opportunities that fast, reliable connectivity offers.

The Gigabit Broadband Voucher Scheme enables us to bring a full fibre gigabit-enabled broadband connection to your School





[James Twine](#) and [Victoria Sargeant](#)



01752 292351



[Wolferstans website](#)



Wolferstans are education law specialists providing a complete service for local schools. The services we offer include; ongoing human resources/employment law support, education law, SEND Tribunals, Employment Tribunals, Academy conversions and MAT mergers/expansion projects in addition to expertise and experience of handling complaints to the ICO and Subject Access Requests.

CAPH member offer

Wolferstans offer free termly legal & employment seminars for CAPH member schools. CAPH schools also receive a discount on all quotations.

Wolferstans also provide legal support to CAPH CIC.



[Lucy Pickernell](mailto:lucy.pickernell@ypo.co.uk) Area Sales Manager

07738 887 637

www.ypo.co.uk

YPO supplies products and services to a wide range of customers including schools, local authorities, charities, emergency services, public sector and other businesses such as nurseries and care homes.

We're 100% publicly owned, by 13 local authorities, which means the profits we make are returned to our public sector customers, delivering even better value for money.

Our range includes around **30,000 products and 100 frameworks**; so whether it's pens and paper, computers, furniture, or even things like food and insurance, we can help you get the best deals around.



CAPH member offer

As we can combine your demands with our other customers, we can negotiate a better deal for you than if you tried on your own.



www.zenergi.co.uk

Energy designed around you

We have a wealth of knowledge with the utilities industry and our aim is getting the best value for **you** with a strong focus on customer service. We understand the frustrations of School Business Leaders and you'll be comforted to know that our competitive pricing is procured through an OJEU compliant framework.

We'll remove the stress of procurement, getting the most cost-effective utility pricing, and help you balance your budgets, manage your bills, invoicing, contracts and suppliers along with our range of technical services.

Meet your local energy expert
Michelle Villiers

Specialities:

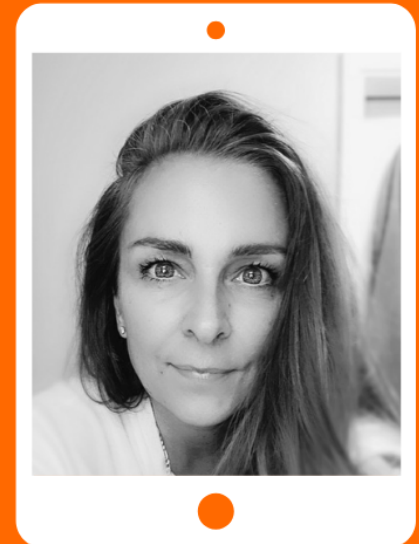
- Energy procurement
- Energy compliance
- Energy performance



POSITIVE + ENERGY

"Contact me to discuss your energy needs. It won't cost you anything and could see some great savings!"

Michelle



e: michelle@zenergi.co.uk

t: 07940 732933

zenergi

CAPH Strategic Partners



The Teaching School Hub Partnership for Cornwall & the Isles of Scilly. One Cornwall provides provision for:

- Initial Teacher Training
- Early Career Framework
- Appropriate Body services
- Reformed NPQs
- CPD

CAPH has close links with the NAHT nationally and with the Cornwall branch.



Helen Collinge,
Cornwall Branch Secretary
Cornwallsw@nahtofficials.org.uk

Ian Bruce, Pastoral Support
arekid31@aol.com
07860 146774




From supporting young people to find work and develop skills to helping start-ups and enterprises thrive, Real Ideas work to solve problems and create positive and lasting social change.

Cornwall Music Education Hub

The Cornwall Music Education Hub is a partnership of both local and national arts and music organisations working together to support the music education of young people in Cornwall.

CAPH Strategic Partners

<div><h2>CHEFS IN SCHOOLS!</h2></div> <div><h3>WHAT WE DO</h3><p>We train school kitchen teams to serve up healthy, inexpensive, generation-powering food in schools. Packet mixes and ultra-processed produce are off the menu. Meals made from scratch with fresh ingredients take their place.</p><p>Our goal is to feed the future well. Research shows when school food is improved, child obesity falls and wellbeing and attainment increase.</p><p>We reach over 22,000 (and counting) pupils each day, targeting our support in areas where a significant percentage of pupils rely on free school meals. We also help schools struggling to meet the school food standards.</p></div>	